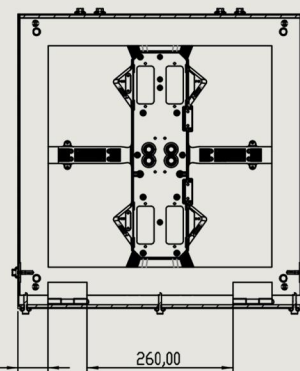
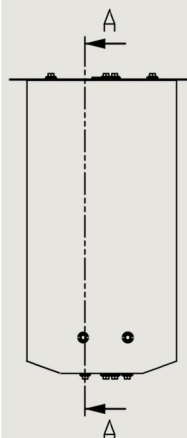
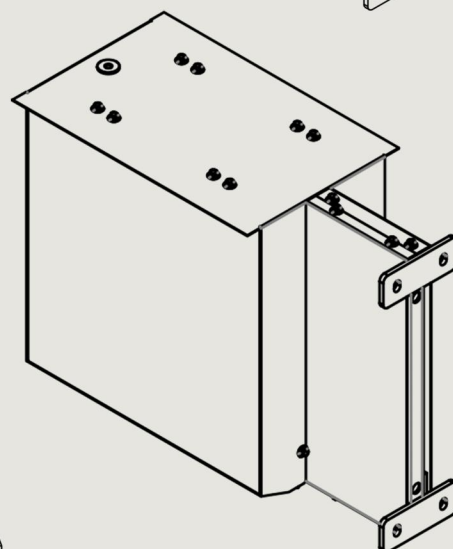
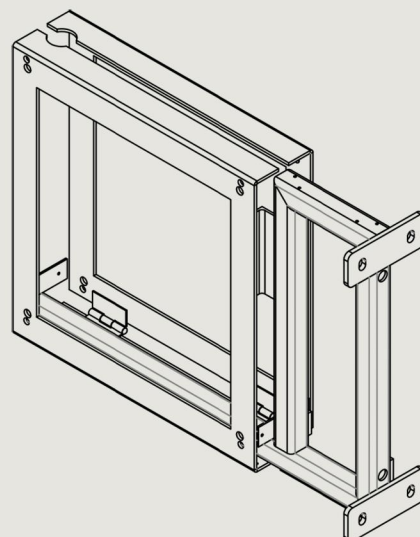




PARAMÈTRES

- **Pixel Pitch** : 3,9mm
- **Pixel configuration** : 1R1G1B
- **LED type** : SMD1921
- **Brightness** : 5500 cd/m.
- **Color temperature** : 9500K
- **Viewing angle** : H: 140° V:140°
- **Pixel density** : 65 536 pixels /m.
- **Recommended viewing distance** : ~3,9 Meters
- **Module size** : 500mm x 125mm (mono module)
- **Cabinet size** : W500mm x H500mm x D80mm
- **Weight** : 7,5kg/panel / Dance Floor + 2,3Kgs
- **Cabinet Area** : 0,250 m.
- **Material** : Aluminium black or Grey (or custom)
- **Aspect ratio** : 1:1
- **Ingress protection** : IP65
- **Operating Temperature/Humidity** : -20°~+50°/10~90%RH
- **Storage Temperature/Humidity** : -35°~+60°/10~90%RH
- **Servicing method** : Rear
- **Pixels per panel** : 128 x128
- **Processing depth** : 16 bits
- **Gray scale** : 16384 levels per color
- **Color** : 281 trillion
- **Brightness control** : Automatic
- **Contrast ratio** : 6000:1
- **Video frame rate** : 50/60 Hz
- **Rate refresh** : ≥1920 Hz – 3840 Hz
- **Input voltage** : 100~240VAC
- **Input power frequency** : 50~60 Hz
- **Input power <max>** : 600W/m2 - 150W/panel
- **Input power <typical>** : 300W /m2 – 75W/panel
- **Life Time** : ≥100,000 Hours
- **LED Wavelength** : R:620~630nm G:520~535nm B:465~475nm
- **Driving Method** : 1/8 Scans, Constant Current Drive
- **Input signal** : RF,S-VIDEO,RGBHV,YUV,YC & COMPOSITION,etc
- **Rigging form** : Hanging bar
- **Data interconnection** : CAT5 Cable) (L≤140m) multi-mode fiber (L≤500m)
single mode fiber (L≤20km)



COUPE A-A
ECHELLE 1 : 6

